

# LANCASHIRE ENVIRONMENTAL FUND

## Grant Funding for Community Building and Community Environmental Projects

- The Lancashire Environmental Fund (LEF) is a partnership between SUEZ Recycling and Recovery UK Ltd (the Landfill Operator), Lancashire County Council, The Wildlife Trust for Lancashire, Manchester and North Merseyside and Community Futures.
- Our role is to distribute Landfill Communities Fund (LCF)/ Landfill Communities Tax through grants to help environmental projects, and those that support the amenities for local community groups, within Lancashire County Council Boundaries.
- The LEF is regulated by Entrust, who are commissioned by His Majesty's Revenue and Customs.
- Applicants can be a not-for-profit registered charity, community or voluntary organisation with a written constitution, or a Parish Council within a 10-mile radius of a landfill site as the crow flies, regardless of whether the site is still in operation.
- We offer Small Grants (Community Building or Environmental) up to £20,000 (but no greater than 75% of total project cost which cannot exceed £30,000).
- We offer Main Grants (Community Building or Environmental) up to £40,000 (but no greater than 80% of total project cost up to £400,000).
- Small and Main Grants are assessed and awarded by the Board. There are 4 application rounds each year and key dates are advertised on the website <https://www.lancsenvfund.org.uk/>
- We also offer Green Grants up to £1,000 to fund small scale community projects that can be accessed by the general public such as Wildflower and bulb planting, Community Orchard or Gardens (but not allotments), Health Walk Waymarking etc. Green Grants are assessed and awarded by the Fund Manager and funding should be spent within the financial year e.g by end March.

## Types of projects the Fund has supported in the past are:

- Children's Play Areas
- Multi Use Games Areas
- Community hall improvements eg Kitchens/toilets/disabled access/solar panels/energy efficiency
- Community Gardens and community open space
- Ponds
- Nature Reserves
- Cycle Paths
- Natural Habitat creation and enhancement and projects linked to natural biodiversity action plans
- Village greens

# LANCASHIRE ENVIRONMENTAL FUND

Non eligible projects include:

- Core costs of an organisation
- Projects that request 100% wholly revenue cost
- Retrospective funding – work that has already been undertaken before any funding is awarded
- Projects that do not meet the funding criteria
- Projects in or on schools grounds
- Residential areas within buildings and any other parts of buildings that are not open to the public (such as offices)
- Car parks and public conveniences
- Community Artwork and /or sculptures
- Any works on public highways, roads, pavements by highways. This does not include recreational footpaths, bridleways or cyclepaths.
- Sports grounds, sports changing rooms or sports related projects
- Projects on allotments
- Projects located in libraries
- Offices of charities, Citizens advice bureaux, offices of statutory service providers and any other charity building where primary purpose is other than the provision of community facilities.
- Village or town centre enhancement schemes such as walkways, street works or signage.

Projects must meet the following criteria:

- Be within 10 miles of a licensed landfill site.
- Have full public access (Entrust minimum requirements are 4 evenings or 2 days every week, 104 days a year)
- Have long term management arrangements where relevant.
- Be completed within 2 years.
- Project must be located within the Lancashire County Boundary but excluding Blackpool and Blackburn with Darwen unitary authorities.

Contact Details:

Website: <https://www.lancsenvfund.org.uk/>

Email: [general@lancsenvfund.org.uk](mailto:general@lancsenvfund.org.uk)

Socials: @lancsenvfund

Phone: 01772 317247

# LANCASHIRE ENVIRONMENTAL FUND

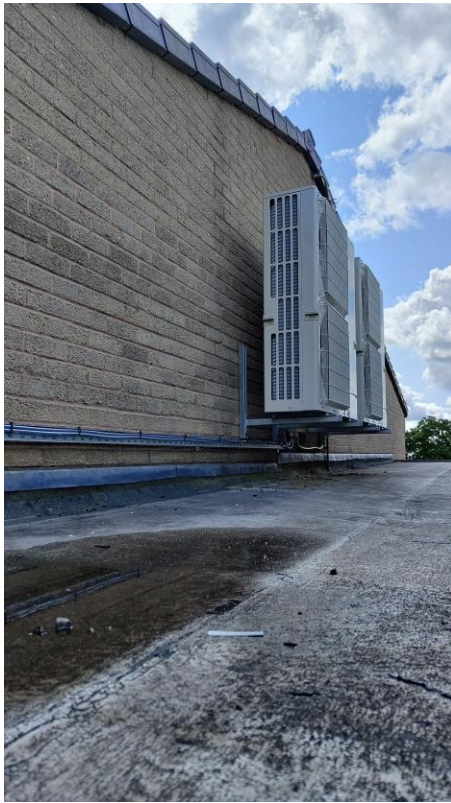


All Access Path, Astley Park Trail,  
Chorley



Community Café Brierfield

# LANCASHIRE ENVIRONMENTAL FUND



Heating and Ventilation Improvements, Mellor Village Hall



# LANCASHIRE ENVIRONMENTAL FUND



Playground, Adventure Trail and Woodland Walk, Walton-Le- Dale